

Cleaning on marble/granite/homogeneous shower floors.

In a bathroom setting, residues from soap, shower foam, bath gel, shampoo and massaging oil should immediately clean away. Allowing these residues sit too long on the stone surface will form streak marks and eventually etched the natural surface. The surface of the stone in the bath room is seen with unsightly whitish looks is commonly known as “Soap Scum”.

When soap scum has occurred, you required SCL Marble Polishing Powder.



Used SCL Stoneclean-Xtra and “Triple-S” cleaning method to clean & maintain marble/granite/homogeneous floor tiles in the bathroom regularly to prevent “soap scum” from depositing on it.

Product needed: SCL STONECLEAN-Xtra (pH9.6)



Available online purchase: www.stoneclean.com.sg

The “TRIPLE-S” Method “Standing” “Stepping” “Scrubbing”



Usage: Use SCL Stoneclean-Xtra at least 3 times a week. Once a day is preferable. Other days, use “Triple-S” cleaning method with water is fine.

Direction to use:

1. Mix 2 to 3 capfuls of SCL Stoneclean-Xtra into a spray bottle and fill-up the bottle with water. Spray the cleaning solution on a dry floor.
2. Put the red pad on the floor. Step on the pad and move the pad around in the shower area as shown in the picture above.
3. After the scrubbing, rinse the floor with water thoroughly.
4. Leave the floor dry naturally.

Bathroom Shower Walls

Provide cleaning to marble/granite/homogeneous shower walls.

Product needed: SCL STONECLEAN-Xtra (pH9.6)



Direction to use:

1. Dilute 2 capfuls of SCL Stoneclean-Xtra with water in a spray bottle.
2. Just spray and scrub the surface with the help of the Red pad.
3. Rinsing with water is required.

** Capful refers to 5-litres size bottle cap*

Apply SCL Clear Enhancer Sealer onto marble bathroom wall will cover-up existing streaks mark. Same time, it will enhance the natural color of the stone. Use periodically will prevent streaks mark from occurring.

Caution: Not recommended to apply on shower floor as it caused slipperiness.

Product needed: SCL 748CLEAR ENHANCER PENETRATING SEALER

Usage: Once a month or when needed.



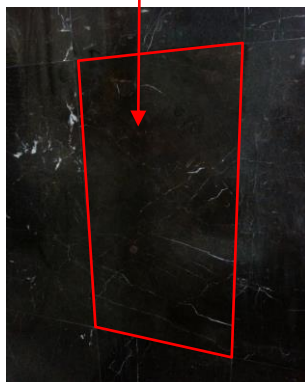
Direction to use:

1. Wet the toilet paper or paper towel with SCL 748Clear Enhancer Sealer.
2. Rub the enhancer sealer on the wall in a circular motion until the streak mark is not visible and the wall is enhanced.
3. Use another piece of dry toilet paper wipe in circular motion until the excessive sealer is wipe away and the wall is free from oily feeling.

Streaks mark on bathroom marble wall



Apply with Clear Enhancer Sealer



Before



After

