

Below polishing procedures for SCL Marble Polishing Powder is designed for a layman(i.e. an unskilled person) who wish to adopt the marble polishing skill. However, it is only suitable to DIY in an area not bigger than 30 sq.ft. such like in a bathroom marble floor and marble vanity top. Any area bigger than 30 sq.ft. required a floor polishing machine to achieve consistency in its shine. Thus, this needs the Professional.

Things to prepare before polishing begin:

- A hand held polishing tool with [variable speed](#)
- A few pieces of clean cloth
- A sprayer bottle filled with water
- One piece of Red Polishing Pad
- A small pail of water
- SCL Marble Polishing Powder



Polishing Procedures:

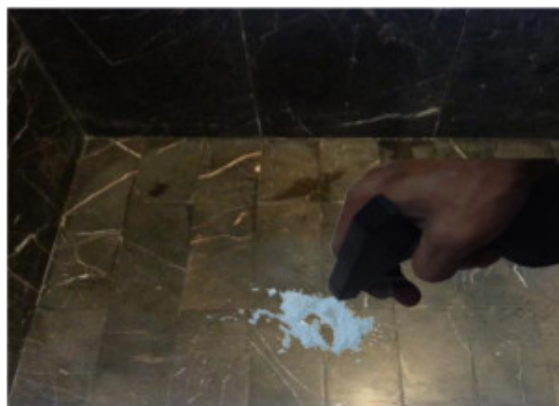
Step1: Attached a "Velcro" pad holder to the hand held polishing tool.



Step2: Attached the red polishing pad to the velco pad holder.
Adjust the tool to the slowest speed.



Step3: Put one table spoon of SCL Marble Polishing Powder onto the dull area. This amount of powder can cover area of 2 to 3 palms size.



Step4: Spray a few drop of water to the powder.

Step5: Place the polishing tool on top of the powder. Remember to adjust the machine to the slowest speed (no.1 speed) before begin the polishing. Polish in a to and fro direction for 1 to 2 minutes. The powder will become slurry. If powder is too dry, stop the machine, dip your hand into the pail of water and sprinkle few drops of water to the powder. At this moment, do not use the spray bottle, you might tend to spray too much water to the powder.

Step6: Continue the polishing. While polishing and slurry is about to dry, adjust the machine to medium speed(no.4 or no.5 speed). Now, move the machine to and fro a faster pace. Polished a bigger circumference and polished the slurry to dry. You begin to see the shine is attained, stop the polishing.

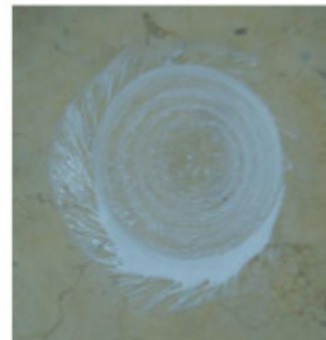
Step7: Sprayed the diluted SCL Stoneclean/SCL Stonemist(ready-to use) onto the marble surface. Wipe the surface to remove all remaining powder residues. Rinse the floor again with a damp cloth if need be. Leave the floor dry naturally.



Sprayed only this small amount of water as shown in this picture below.



This slurry is too wet. Caution: Do not allow the wet slurry stay too long on other shiny area of marble, it will etch the surface. Immediately clean away the wet slurry with a damp cloth or dry cloth.



This slurry is just right. Polish the slurry until dry.

If your slurry is too wet and the slurry splashed out like the picture on the right, you may not have to wipe up the splashed slurry with a damp cloth. At Step6 mentioned above, upon you have adjust the machine to a faster speed and polished at a faster pace, polished a bigger circumference to cover the splashed area and polished the splashed slurry to dry. This method can also prevent the splashed slurry from etching the marble surface.



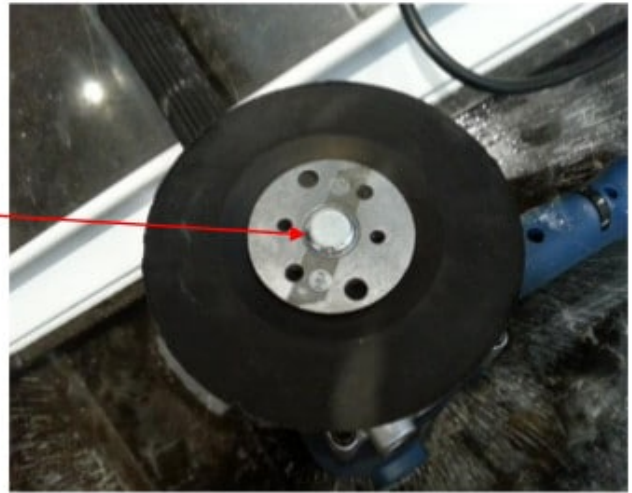
Polishing Tips:

- Put some damp cloth to surround the area that need the polishing. This will prevent too much slurry splashes to other area during polishing.
- Do not put cloth too near the polishing area as you may accidentally coil the cloth to the polishing machine during polishing. STOP the machine immediately if this happens.

Things to Avoid and to Take Precaution:

- Always work the polishing powder on a small area(1 to 2 palm size) until you are familiar with the polishing procedures before working on a bigger area.
- Do not over polish with SCL Marble Polishing Powder. It will result an orange peel look.
- Do not wet the marble powder with water if you are not ready to start the polishing.
- If you have sprayed too much water to the marble powder and you could not polish the powder to dry after 3 minutes, pick up the slurry immediately with a damp cloth. Continue the polishing to dry.
- Dry the floor and check the shine. If etched mark or dull spot remains, spray little water to the RED pad where there are remaining marble powder on the pad. Polished at a fast speed and a fast pace until the powder dry explained at step6. The shine will improve.
- Deep scratches and severe dullness on the marble surface required the Diamond Polishing System or the Professional.
- A single speed machine or a hammer effect car polisher machine are not suitable to use for the polishing on marble floor.

This pad holder is not suitable to be used for polishing even after it has been pasted on with Velcro pad. The round metal will continue to scratch the marble surface during polishing.



Scratches caused by the metal plate during polishing.

